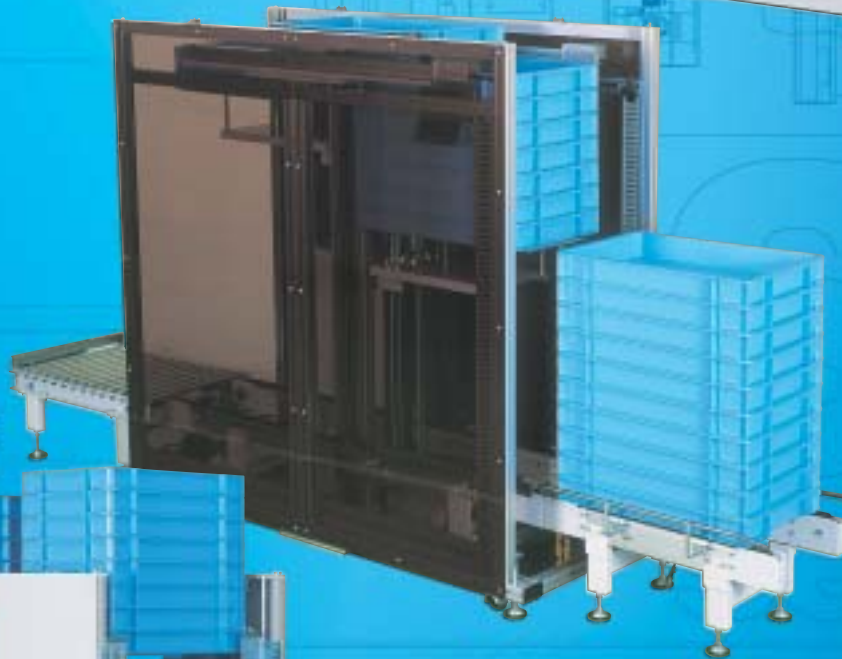


HARMO

ST series

Molded Parts Automatic Stock System



Controller for STP

Vertical-and-Horizontal Axis Inverter Motor Driven Stock System

STP-V01

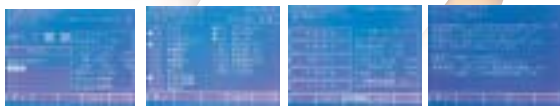


Features

- ① 15% less price than our conventional stoker.
- ② 27% smaller floor area than our conventional stoker.
- ③ Stoker exchange cycle is reduced from 18 sec. to 15 sec.
- ④ User container sizes are acceptable. (See Mechanical Spec.)
- ⑤ Controller-on-body design ensures space saving.
- ⑥ Container palletizing is provided standard.
- ⑦ Three-light (red, yellow & green) alarm beacon is provided standard.

Controller

5 in.
touch panel
display



Features

- User-friendly 5 in. touch panel
- 40 mold data memory
- Easy operation

Mechanical Spec.

Outer dimensions (DxWxH)	(mm)	1650×716×1825	
Max. parts receiving height	(mm)	1600	
Horizontal travel	(mm)	1000	
Max. weight capacity (including containers)	(kg)	10	
Container size	(mm)	800 (L)×500 (W)	
Container exchange time	(sec.)	15	
Palletizing stop accuracy	(mm)	±1 NOTE1	
Working air pressure	(MPa)	0.5	
Conveyor size	(mm)	300Pitch×1660	
Option conveyor	(mm)	IN conveyor (chain)	300 pitch x 1.0m to 3.0m (0.5m intervals)
		OUT conveyor (roller)	300, 400, 500, 600W 1.0m to 3.0m length (0.5m intervals)

Controller Spec.

Power supply		200VAC 50/60Hz 3-phase Allowable voltage fluctuation ±10% Allowable frequency fluctuation ±5%
Max. current	(A)	10
Rated power	(W)	500
Main motor	(KW)	0.2 gear ratio 1/20 for vertical and horizontal
Control method		Stored program cyclic
Speed control		Inverter
Ambient temperature range	(℃)	0~40
Ambient humidity range	(%)	Relative humidity 35 to 85 (No dew condensation)
Anti vibration	(G)	0.6 or less
Noise tolerance	(V)	1000 or less (Noise width 1μS)

NOTE 1. Practically, allow for the clearance of container grip unit.

STH-V01

Features

- ① 10 sec. or less of container exchange time, faster than STP-V01.
- ② User container sizes are acceptable. (See Mechanical Spec.)
- ③ Controller-on-body design ensures space saving.
- ④ Multi-point stop (only horizontal)
- ⑤ Three-light (red, yellow & green) alarm beacon is provided standard.
- ⑥ Communication with HAS II f series robot is available. (Option)



Mechanical Spec.

Outer dimensions (mm)	Longitudinal conveyance	1600×671×1500		
Conveyor (mm)	Longitudinal conveyance	300pitch×1500		
Parts receiving height (mm)		1500		
Container ser height (mm)		1175		
Container exchange time (sec.)		10		
Lifter weight capacity (kg)		50		
Chuck weight capacity (kg)		6		
Working air pressure (MPa)		0.5		
Standard container (mm)	Type	L	W	H
	Sanbox#36-2H	592×384	71	15
	Sanbox#36-2E	592×384	100	10
	Sanbox#36-2C	592×384	110	9
	Sanbox#56E	658×448	96	11
	Sanbox#56D	658×448	122	8
	Containers equivalent to Gifu Plastic Industry			
Max. container size (mm)	Longitudinal conveyance	660X450X125		
Min. container size (mm)	Longitudinal conveyance ()	X350X250 NOTE 1		
Option	IN conveyor (chain)	300 P x 1.0m to 3.0m L (0.5 interval)		
	IN conveyor (chain)	450 P x 1.0m to 3.0m L (0.5 interval)		
	OUT conveyor (roller)	500 W x 1.0m to 3.0m L (0.5 interval)		
	OUT conveyor (roller)	700 W x 1.0m to 3.0m L (0.5 interval)		

Controller Spec.

Power supply	200VAC 50/60Hz 3-phase
	Allowable voltage fluctuation ±10%
	Allowable frequency fluctuation ±5%
Max. current (A)	5
Rated power (W)	330
Control method	Stored program cyclic
Ambient temperature (°C)	0~40
Ambient humidity (%)	Relative humidity 35 to 85 (no dew condensation)
Anti vibration (G)	0.6 or less
Noise tolerance (V)	1000 or less (Noise width 1μS)

Controller

User-friendly Controller



STR-V01

Features

- ① Returning containers realizes saving floor space and handling a large number of containers.
- ② User container sizes are acceptable. (See Mechanical Spec.)
- ③ Controller-on-body design ensures space saving.
- ④ Three-light (red, yellow & green) alarm beacon is provided standard.
- ⑤ Retractable OUT roller conveyor
- ⑥ Communication with HAS II f series robot is available. (Option)

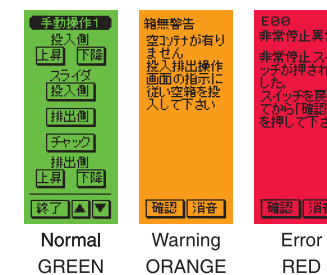


Mechanical Spec.

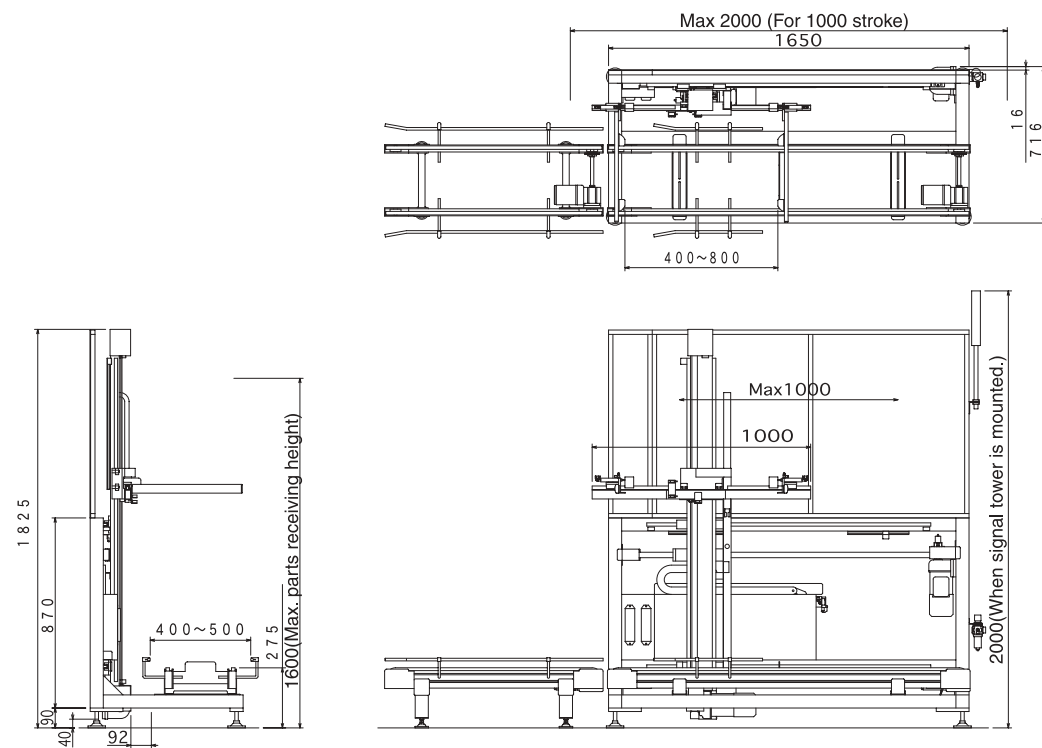
Power supply (V)	200VAC 50/60Hz 3-phase	
Lifter weight capacity (kg)	MAX50(including containers)	
Unstacking unit weight capacity (kg)	MAX20(including containers)	
Stacking capacity	Upper conveyor	3 piles
	Lower conveyor	5 piles (including a pile on OUT retractable conveyor)
Max. container size (mm)	650×450×160	
Min. container size (mm)	590×380×40	
Container exchange time (sec.)	8	
Alarm beacon	Red, Yellow, Green (3 colors)	
OUT retractable conveyor (mm)	Max. 500 advance	

Features

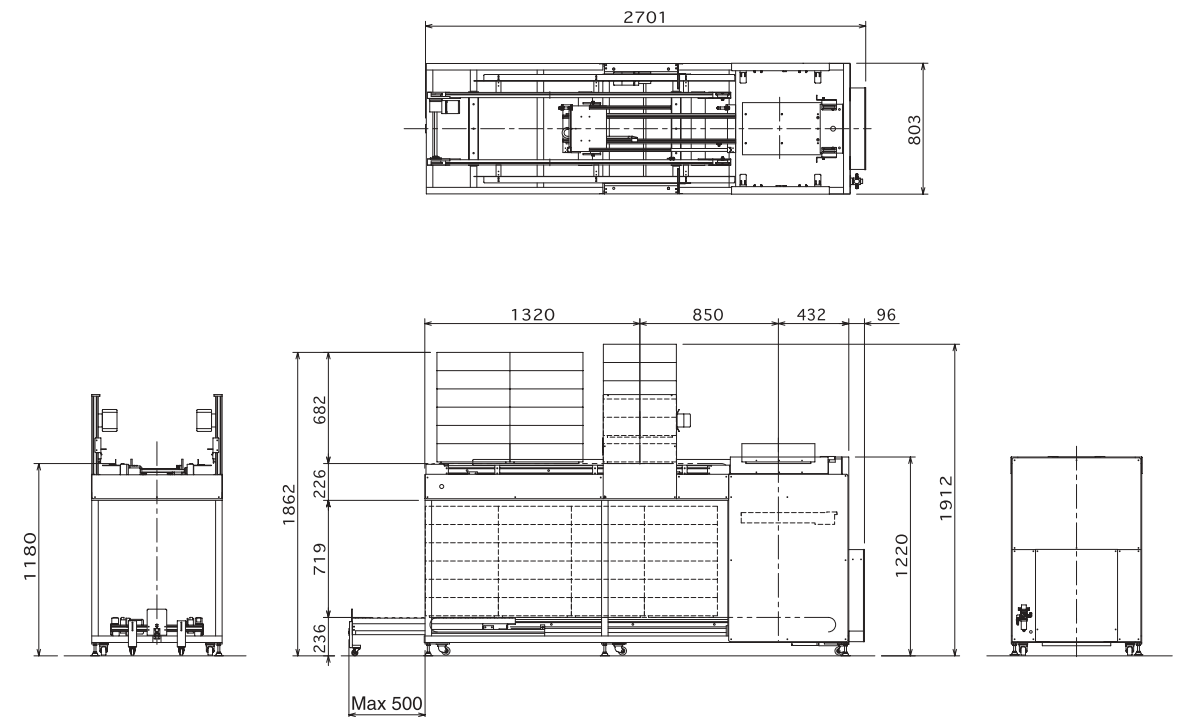
- Handheld type
- Easily viewable 4in. touch panel
- User-friendly controller



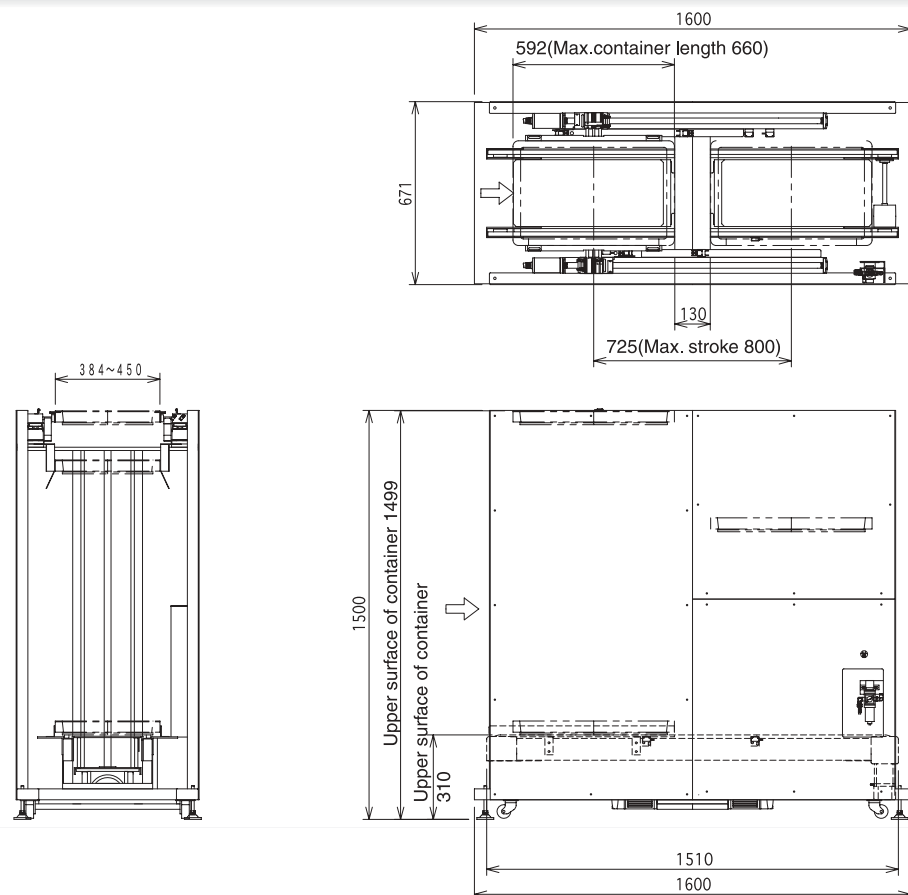
STP-V01 Dimensions



STR-V01 Dimensions



STH-V01 Dimensions



Customization

Tray stoker is also available.
(STT-V01)

STT tray stock system provides stock of precision molded parts such as connectors.



Manufacturer:

HARMO CO., LTD.

INTERNATIONAL MARKETING DEPT.
4124-1, MINAMI-MINOWA KAMIINA-GUN NAGANO-PREF.399-4595 JAPAN
TEL.+81-265-73-8820, FAX.+81-265-73-8964

ISO9001 CERTIFIED

<http://www.harmo-net.co.jp>

PRINTED WITH SOY INK **R100** This catalogue uses 100% recycled paper.

STSer-2E 030915KP